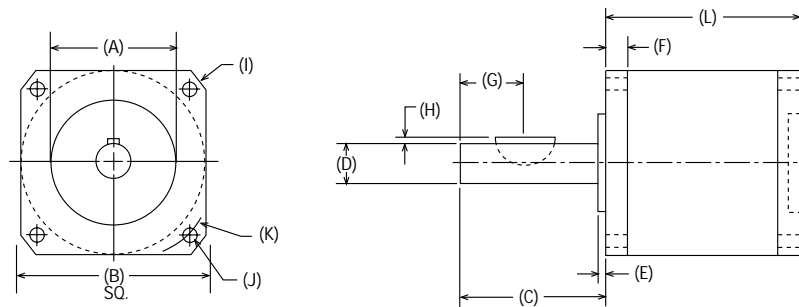


SI SERIES: SPUR GEARHEADS

NEMA DIMENSIONS PRECISION GEARHEADS



PART NUMBER	A PILOT DIAMETER (in.)	B SQUARE FLANGE (in.)	C SHAFT LENGTH (in.)	D SHAFT DIAMETER (in.)	E PILOT LENGTH (in.)	F FLANGE THICKNESS (in.)	G KEY LOCATION (in.)
023SIX	1.498/1.500	2.25	1.00	.3745/.3750	0.062	0.188	0.38
034SIX	2.873/2.875	3.25	1.25	.4995/.5000	0.062	0.375	0.56
042SIX	2.185/2.187	4.20	1.50	.6245/.6250	0.062	0.500	0.50
056SIX	4.498/4.500	5.75	2.00	.9995/1.0000	0.125	1.000	0.63
PART NUMBER	H KEY HEIGHT (in.)	I HOUSING DIAMETER (in.)	J BOLT HOLE DIAMETER (in.)	K BOLT HOLE CIRCLE (in.)	KEY WIDTH/ WOODRUFF KEY (in.)	RADIAL SHAFT LOADING (LBS.)	AXIAL SHAFT LOADING (LBS.)
023SIX	.047	2.95	0.205	2.625	0.094 / #303	75	75
034SIX	.062	4.38	0.220	3.875	0.125 / #404	100	125
042SIX	.078	5.51	0.280	4.950	0.156 / #505	150	150
056SIX	.125	7.87	0.410	7.000	0.250 / #808	200	300
PART NUMBER	L GEARHEAD LENGTH (in.)	BACKLASH STD/LOW (ARC-MINUTES)	CONTINUOUS TORQUE MAX. (IN LBS.)	MOMENTARY TORQUE MAX. (IN LBS.)	GEARHEAD WEIGHT (LBS.)	MAX. INERTIA REFLECTED TO INPUT (OZ. IN. SEC ²)	PINION GEAR INERTIA (OZ. IN. SEC ²)
023SIX	2.25	20/10	20	30	1.5	7.15E-04	7.59E-04
034SIX	3.00	20/10	60	90	3.5	5.35E-04	1.52E-03
042SIX	3.75	20/10	200	300	6.5	4.33E-03	7.59E-03
056SIX	4.50	20/10	350	500	15.5	6.05E-03	4.57E-02

AVAILABLE RATIOS AND SHAFT ROTATION*					SPECIFICATIONS
SIZE 023	3:1	SAME	SIZE 034	3:1	Input RPM: 4000 Max. Minimum Efficiency: 90% Operating Temperature Range -60°F to +250°F Note: Size 056 Requires a Mounting Adapter Motor Mounting Hardware Supplied
	5:1	SAME		5:1	
	10:1	SAME		10:1	
	15:1	OPPOSITE		15:1	
	20:1	OPPOSITE		20:1	
	30:1	OPPOSITE		30:1	
	50:1	OPPOSITE		50:1	
	100:1	SAME		100:1	
SIZE 042	3:1	SAME	SIZE 056	3:1	
	5:1	SAME		5:1	
	10:1	SAME		10:1	
	15:1	OPPOSITE		15:1	
	20:1	OPPOSITE		20:1	
	30:1	SAME		25:1	
	50:1	OPPOSITE		40:1	
	100:1	SAME			

*Rotation references the gearhead output shaft direction with respect to motor shaft direction.

ALL SPECIFICATIONS SUBJECT TO CHANGE.